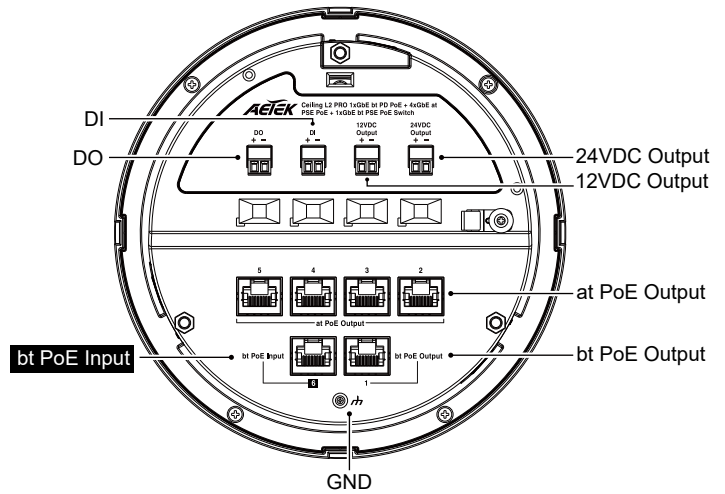
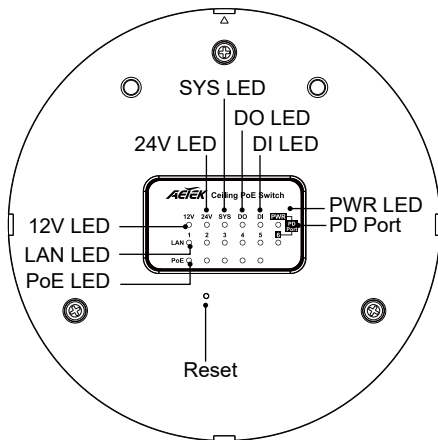


### PACKAGE CONTENTS

|                 |                               |
|-----------------|-------------------------------|
| * 1x PoE switch | * 1x Quick Installation Guide |
|-----------------|-------------------------------|

### CONNECTION

C62-050-30-A / C62-050-30-B



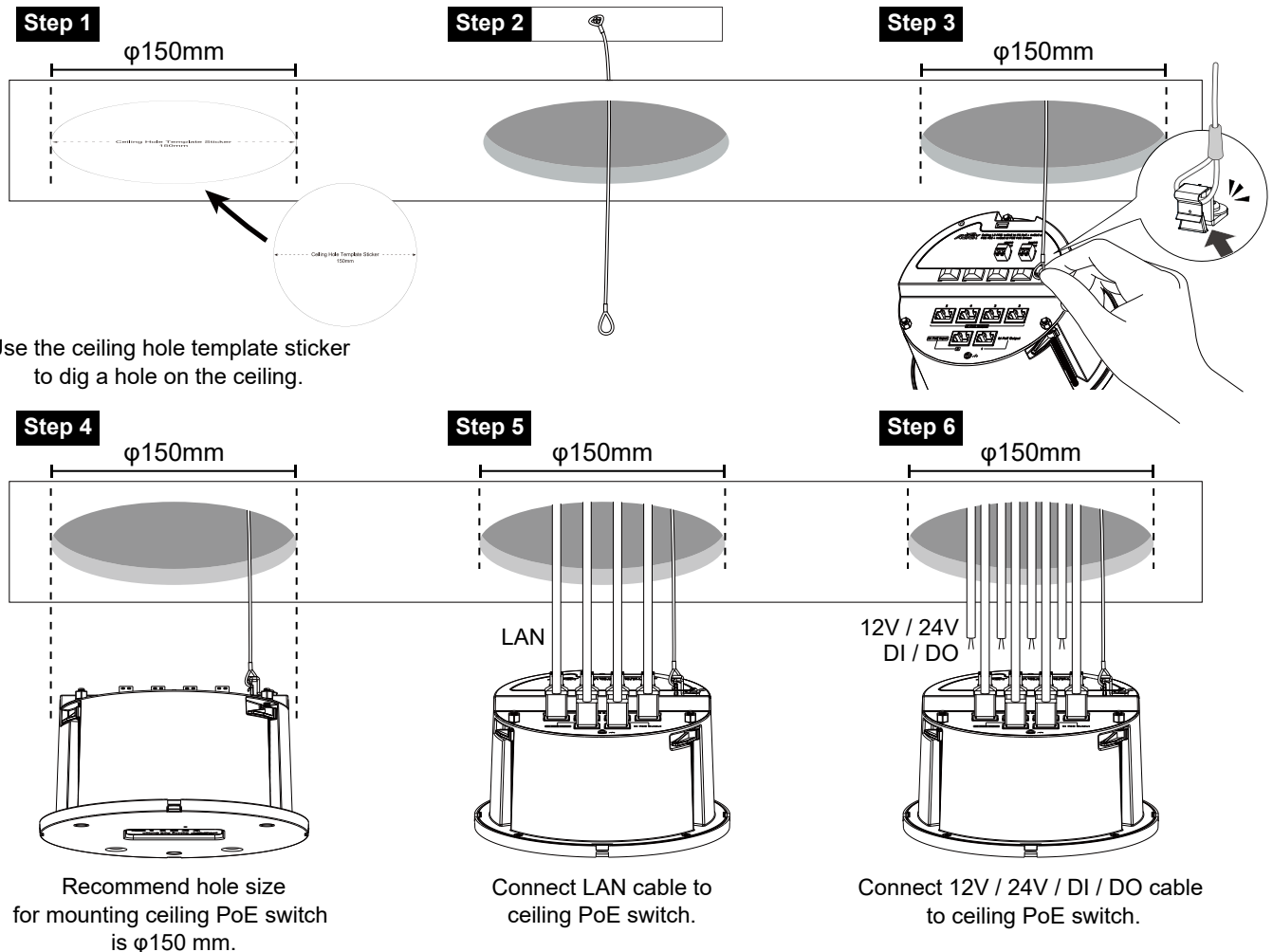
Installed on the system ceiling

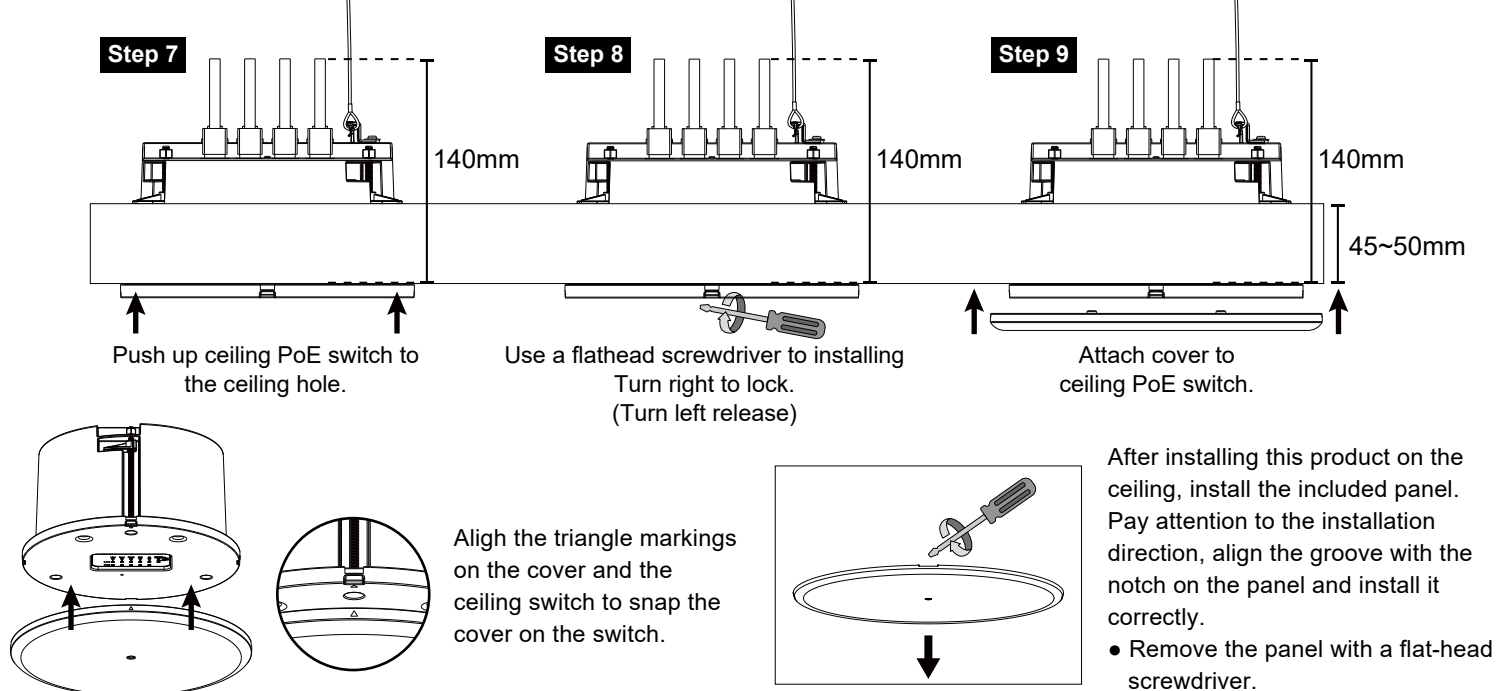
1. Attach the ceiling mount bracket to plasterboard, etc.

- It is recommended to add the fastening screw to the hole size of the ceiling, turn it with a screwdriver to install it. The ceiling thickness that can be connected with the clamping bracket is from 5 to 45 mm.
- The recommended screw torque is 7kgf-cm  $\pm$  3.
- Install on the ceiling with sufficient strength.
- If you have to install it on rock wool ceiling and other weak ceiling panels, please provide enough reinforcement.
- The recommended ceiling opening size is  $\phi$ 150mm.
- The recommended minimum space (height) for ceiling switch installation is 140mm (For Installation and CAT5/6 cable routing.)

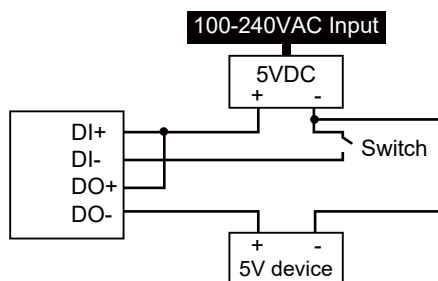
### Installation Steps

C62-050-30-A / C62-050-30-B

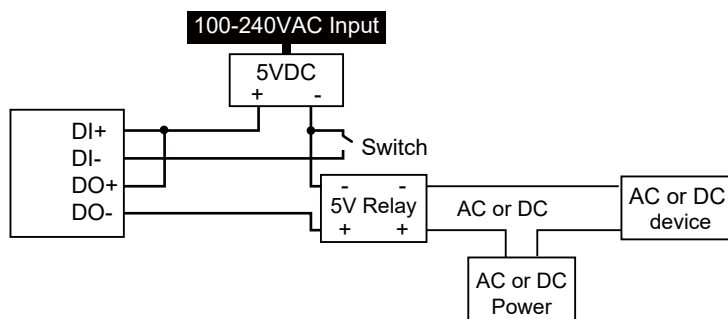




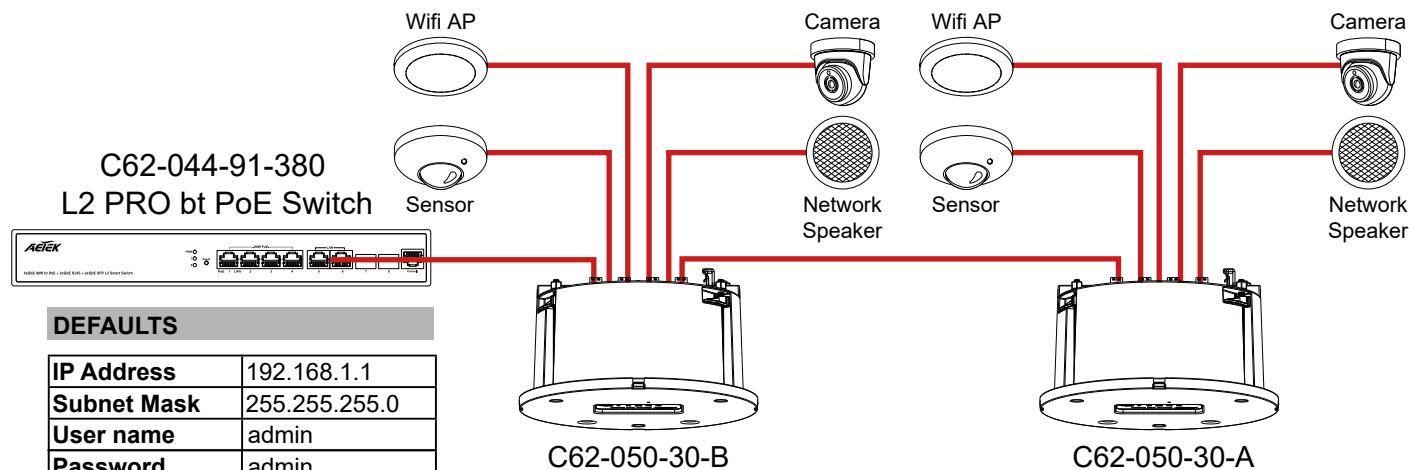
**DI/DO Connection Diagram**



**DI/DO Connection Diagram w/ AC or DC Relay**



- Ensure that all 12VDC, 24VDC, and DI/DO devices are properly connected before applying or turning on the DC input power. Connecting these devices after the power is on may result in malfunction or damage.



#### DEFAULTS

|             |               |
|-------------|---------------|
| IP Address  | 192.168.1.1   |
| Subnet Mask | 255.255.255.0 |
| User name   | admin         |
| Password    | admin         |

#### LED DEFINITIONS

|              |                |  |
|--------------|----------------|--|
| <b>Power</b> | Amber ON       | The Power LED lights up when the switch is connected to a power source.                      |
| <b>LAN</b>   | Green ON       | Port is enabled and link established.  |
|              | Green Blinking | Port is transmitting and receiving data.   |
| <b>PoE</b>   | Amber ON       | Indicates the PoE powered device (PD) is connected and the port supplies power successfully. |
|              | Amber Off      | Indicates no powered device (PD) connected.  |
| <b>SYS</b>   | Green ON       | The System is ready.   |
| <b>12V</b>   | Amber ON       | Have output 12VDC power.   |
| <b>24V</b>   | Amber ON       | Have output 24VDC power.   |
| <b>DI</b>    | Green ON       | The DI is received single.   |
| <b>DO</b>    | Green ON       | The Do is enable.  |

#### Reset Button

| Task            | Press time     | Port Status LED Behavior |
|-----------------|----------------|--------------------------|
| Restart         | 2 ~ 7 seconds  | All LEDs are OFF         |
| Restore default | 7 ~ 12 seconds | All LEDs stay ON         |