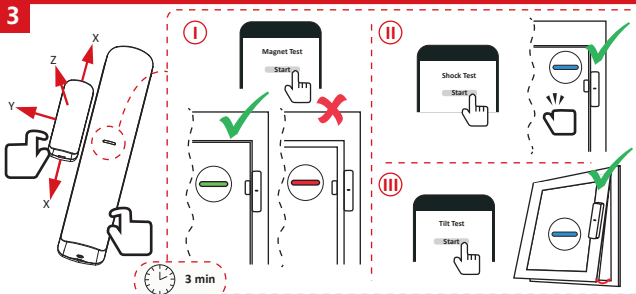
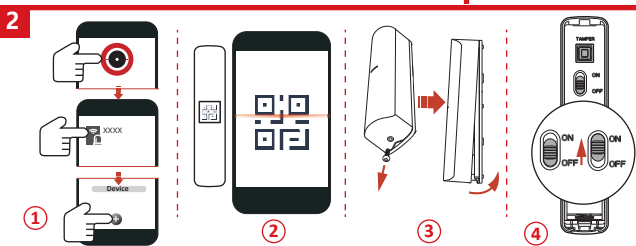


User Manual



© 2023 Hangzhou Hikvision Digital Technology Co., Ltd. All rights reserved.
About this Manual
This manual contains instructions for using and managing the Product. Pictures, charts, images and all other information hereafter are for description and explanation only. The information contained in this Manual is subject to change without notice. Due to firmware updates or other reasons, please find the latest version of this Manual at the Hikvision website (<https://www.hikvision.com/>). Please use this Manual with the guidance and assistance of professionals trained in supporting the Product.
HIKVISION and other Hikvision's trademarks and logos are the properties of Hikvision in various jurisdictions. Other trademarks and logos mentioned are the properties of their respective owners.
DISCLAIMER
TO THE MAXIMUM EXTENT PERMITTED BY APPLICABLE LAW, THIS MANUAL AND THE PRODUCT DESCRIBED, WITH ITS HARDWARE, SOFTWARE AND FIRMWARE, ARE PROVIDED "AS IS" AND "WITH ALL FAULTS AND ERRORS". HIKVISION MAKES NO WARRANTIES, EXPRESS OR IMPLIED, INCLUDING WITHOUT LIMITATION, MERCHANTABILITY, SATISFACTION OR FITNESS FOR A PARTICULAR PURPOSE. YOU USE THE PRODUCT BY YOU AT YOUR OWN RISK. IN NO EVENT WILL HIKVISION BE LIABLE TO YOU FOR ANY SPECIAL, CONSEQUENTIAL, INCIDENTAL, OR PUNITIVE DAMAGES, INCLUDING DIRECT, INDIRECT, INCIDENTAL DAMAGES, BUSINESS INTERRUPTION, LOSS OF PROFITS, OR LOSS OF DATA, CORRUPTION OF SYSTEMS, OR LOSS OF DOCUMENTATION, WHETHER BASED ON BREACH OF CONTRACT, TORT (INCLUDING NEGLIGENCE), PRODUCT LIABILITY, OR OTHERWISE. IN CONNECTION WITH THE USE OF THE PRODUCT, EVEN IF HIKVISION HAS BEEN ADVISED OF THE POSSIBILITY OF SUCH DAMAGES OR LOSS, YOU ACKNOWLEDGE THAT THE NATURE OF THE INTERNET PROVIDES FOR INHERENT SECURITY RISKS, AND HIKVISION SHALL NOT TAKE ANY RESPONSIBILITY FOR ANOMALOUS OPERATION, PRIVACY VIOLATION OR OTHER DAMAGES RESULTING FROM CYBER ATTACK, HACKER ATTACK, VIRUS INJECTION, OR OTHER INTERNET SECURITY RISKS. HOWEVER, HIKVISION WILL PROVIDE TIMELY TECHNICAL SUPPORT IF REQUIRED. YOU AGREE TO USE THIS PRODUCT IN COMPLIANCE WITH ALL APPLICABLE LAWS AND REGULATIONS, INCLUDING ANY LAWS OR REGULATIONS THAT YOU ARE SUBJECT TO. YOU ARE RESPONSIBLE FOR USING THIS PRODUCT IN A MANNER THAT DOES NOT INFRINGE ON THE RIGHTS OF THIRD PARTIES, INCLUDING WITHOUT LIMITATION, INTELLECTUAL PROPERTY RIGHTS. YOU AGREE TO WAIVE OR RELEASE HIKVISION FROM LIABILITY FOR ANY DAMAGES, INCLUDING WITHOUT LIMITATION, PROPERTY DAMAGES, OR DATA INFRINGEMENT. YOU SHALL NOT USE THIS PRODUCT FOR ANY PROHIBITED INDUSTRY, INCLUDING THE PRODUCTION OF CHEMICAL OR BIOLOGICAL WEAPONS, ANY ACTIVITIES IN THE CONTEXT RELATED TO ANY NUCLEAR EXPLOSIVE OR UNSAFE NUCLEAR FUEL-CYCLE, OR IN SUPPORT OF HUMAN RIGHTS VIOLATIONS.
IN THE EVENT OF ANY CONFLICT BETWEEN THIS MANUAL AND THE APPLICABLE LAW, THE LATTER PREVAILS.
The product and, if applicable, the applied accessories are not marked with "CE" and comply therefore with the applicable harmonized European standards listed under the ENEC Directive 2004/108/EC, the EMC Directive 2004/108/EC, the RoHS Directive 2002/95/EC (WEEE directive). Products marked with this symbol cannot be disposed of as unsorted municipal waste in the European Union. For proper recycling, return this product to your local supplier upon the purchase of equivalent new equipment, or dispose of it at a designated collection point. For more information visit www.recycle4eu.com.
2006/96/EC (Battery Directive): This product contains a battery that cannot be disposed of as unsorted municipal waste in the European Union. See the product documentation for specific battery information. The battery is marked with this symbol, which may include: a battery symbol with a diagonal slash, a crossed-out wheeled bin symbol, or a crossed-out incineration symbol. The battery symbol may include a plus sign to indicate cadmium (Cd), lead (Pb), or mercury (Hg). For proper recycling, return the battery to your supplier or to a designated collection point. For more information see www.recycle4eu.com.
In the use of the product, you must be in strict compliance with the electrical safety regulations of the nation and region.

Español
1 APARIENCIA
1. Imán
2. Línea de posicionamiento
3. Piloto
4. Botón antimaniculadura
7. Batería
5. Interruptor de alimentación
6. Entradas externas
8. Sensor de golpes
2 REGISTRO
3 PRUEBA
Compruebe que la posición de instalación sea la adecuada.
I. Prueba del imán



BATTERY CAUTION
CAUTION:
- Risk of explosion if the battery is replaced by an incorrect type.
- Improper replacement of the battery may result in fire or risk of explosion (for example, in the case of some lithium battery types).
- Do not dispose of the battery into fire or a hot oven, or mechanically crush or cut the battery, which may result in an explosion.
- Do not leave the battery on an extremely high temperature surrounding environment, which may result in an explosion or the leakage of flammable liquid or gas.
- Do not subject the battery to extremely low air pressure, which may result in an explosion or the leakage of flammable liquid or gas.
- Dispose of used batteries according to the instructions.
- Identify the positive terminal(s) of equipment which is used with, or generates direct current - identifies the negative terminal(s) if equipment which is used with, or generates direct current.
INSTALLATION CAUTION:
- Install the equipment according to the instructions in this manual.
- The power supply for the equipment must be DC 3V, attached to the flood light in accordance with the installation instructions.
- The additional force must be equal to three times the weight of the equipment but not less than 50N. The equipment and its associated mounting means shall remain secure during the installation. After the installation, the equipment, including any associated mounting parts, shall not be damaged.
- No naked flame sources, such as lighted candles, should be placed on the equipment.

English
1 APPEARANCE
1.Magnet
2.Positioning line
3.Indicator
4.Tamper Button
5.Power Switch
6.External Inputs
7.Battery
8.Shock Sensor
2 ENROLLMENT
3 TEST
Check if the installation position is properly.
I. Magnet Test

Magnet Detection Performance Table

Axes of Operation	Event	Without Nominal Distance		With Nominal Distance 5mm	
		Distance in Air	Distance in Air	Distance in Air	Distance in Air
X+	Remove	11	12	14	14
	Approach	12	12	12	12
X-	Remove	11	15	15	15
	Approach	10	12	12	12
Y	Remove	35	30	30	30
	Approach	28	23	23	23
Z+	Remove	48	46	46	46
	Approach	40	38	38	38
Z-	Remove	41	38	38	38
	Approach	32	30	30	30

II. Shock Test
Sensitivity
High
Normal
Low
Suggested scenarios
Concrete
Wood
Window
III. Tilt Test
You can set the tilt angle (5° to 25°) in the mobile client software.
Note: The tilt detection is only applicable to horizontal or vertical scenes. The tilt angle is perpendicular to the geocentric direction as the reference standard.

4 INSTALLATION
I. Check signal strength and align the positioning line.
II. Detection Area for Different Material
a. Glass
b. Wood
c. Concrete
III. Install the detector.
a. with screw
b. with sponge tape (non EMI compliant)
(optional) route the cable through cable hole if external inputs required.
Note: Installation with sponge tape is not recommended if shock detection enabled.
Warning: The actual wireless range may vary on different mounting surface, try avoiding metal surface on installation.

User Manual

Scan the QR code for more information and operation help.

Specification

Detection gap	According to the magnet detection performance table
External inputs	2
Shock detection	Yes
Tilt detection	Up to 25°
LED indicator	Green (MC), Orange (tilt), Red (shock), Blue (alarm)
Operating temperature	-10 °C to 55 °C (-14 °F to 131 °F)
Storage temperature	-20 °C to 60 °C (-4 °F to 140 °F)
Operating humidity	10% to 90%
Sensor	22.5 mm × 103 mm × 23.2 mm Magnet: 13 mm × 34.4 mm × 11.4 mm
Weight	60 g
Transmission frequency	433 MHz
RF range	1 km (open area)
Battery	CR123A × 1 (included), 3VDC, Max.1600mAh, Min. 900mAh
Standard battery life	3 years
PS Type	C
Current	Max. current: 70mA Present current: 33.3uA
Voltage Range	Fully charged (new) to 2.65 VDC (battery)
Low voltage value	2.65 V

FCC Information
Please take attention that changes or modification not expressly approved by the party responsible for compliance could void the user's authority to operate the equipment.
FCC compliance: This equipment has been tested and found to comply with the limits for a Class B digital device, pursuant to part 15 of the FCC Rules. These limits are designed to provide reasonable protection against harmful interference in a residential installation. This equipment generates, uses and can radiate radio frequency energy and, if not installed and used in accordance with the instructions, may cause harmful interference to radio communications. However, it is not guaranteed that interference will not occur in a particular installation. If this equipment does cause harmful interference to radio or television reception, which can be determined by turning the equipment on or off, the user is encouraged to try to correct the interference by one or more of the following measures:
-Reorient or relocate the receiving antenna.
-Increase the separation between the equipment and receiver.
-Connect the equipment into an outlet on a circuit different from that to which the receiver is connected.
-Consult the dealer or an experienced radio/TV technician for help.
This equipment should be installed and operated with a minimum distance 20cm between the radiator and your body.
FCC Conditions
This device complies with part 15 of the FCC Rules. Operation is subject to the following two conditions:
1. This device may not cause harmful interference.
2. This device must accept any interference received, including interference that may cause undesired operation.

FCC Information
Please take attention that changes or modification not expressly approved by the party responsible for compliance could void the user's authority to operate the equipment.
FCC compliance: This equipment has been tested and found to comply with the limits for a Class B digital device, pursuant to part 15 of the FCC Rules. These limits are designed to provide reasonable protection against harmful interference in a residential installation. This equipment generates, uses and can radiate radio frequency energy and, if not installed and used in accordance with the instructions, may cause harmful interference to radio communications. However, it is not guaranteed that interference will not occur in a particular installation. If this equipment does cause harmful interference to radio or television reception, which can be determined by turning the equipment on or off, the user is encouraged to try to correct the interference by one or more of the following measures:
-Reorient or relocate the receiving antenna.
-Increase the separation between the equipment and receiver.
-Connect the equipment into an outlet on a circuit different from that to which the receiver is connected.
-Consult the dealer or an experienced radio/TV technician for help.
This equipment should be installed and operated with a minimum distance 20cm between the radiator and your body.
FCC Conditions
This device complies with part 15 of the FCC Rules. Operation is subject to the following two conditions:
1. This device may not cause harmful interference.
2. This device must accept any interference received, including interference that may cause undesired operation.

© 2023 Hangzhou Hikvision Digital Technology Co., Ltd. Todos los derechos reservados.
Sobre este manual
Este manual contiene las instrucciones de instalación y gestión del producto. Los gráficos, imágenes y cualquier otra información que encuentre en el manual tienen únicamente fines descriptivos y aclaratorios. La información incluida en el manual está sujeta a cambios. No asuma jamás, debido a las actualizaciones de software u otros motivos, que el sitio web de Hikvision -<https://www.hikvision.com/>- es la última versión de este manual.
Este manual está sujeto a los párrafos de profesionales capacitados en el soporte del producto.
HIKVISION y otras marcas comerciales y logotipos de Hikvision son propiedad de Hikvision en diversas jurisdicciones. Otros logotipos y marcas comerciales son propiedad de sus respectivos dueños.
Descargo de responsabilidad
EN LA MÁXIMA MEDIDA PERMITIDA POR LAS LEYES APLICABLES, ESTE MANUAL, EL PRODUCTO DESCRITO, INCLUIDOS LOS HARDWARE, SOFTWARE Y FIRMWARE, SE SUMINISTRAN "TA-CUAL Y COMO TIENEN" SIN GARANTÍAS, EXPRESITAS O IMPLÍCITAS, NI RESPONSABILIDAD POR DAÑOS CONSECUCIONALES. CUALQUIER RESPONSABILIDAD O OBLIGACIÓN POR PREPUESTO EN MATERIA DEL USO QUE HAGA DEL PRODUCTO CORRE BAJO SU ÚNICO RIESGO. EN NINGÚN CASO, HIKVISION PODRÁ CONSIDERARSE RESPONSABLE ANTE USUARIOS DE NINGÚN DIFERENTE TIPO DE DAÑOS, INCLUIDOS SIN LIMITACIÓN, DAÑOS ECONÓMICOS, DAÑOS MATERIALES, INTERRUPTORES DE ACTIVIDAD COMERCIAL, PERDIDA DE DATOS, CORRUPTIÓN DE LOS SISTEMAS O PERDIDA DE DOCUMENTACIÓN, YA SEA POR INCUMPLIMIENTO DE CONTRATO, RESPONSABILIDAD NEGATIVA, RESPONSABILIDAD DE PRODUCTO O RESPONSABILIDAD EN EL USO DEL PRODUCTO, INCLUIDO CUANDO HIKVISION HAYA RECIBIDO UNA NOTIFICACIÓN DE LA POSIBILIDAD DE DAÑOS DIRECTOS O INDIRECTOS.
El presente documento es un producto de HIKVISION. Se prohíbe la reproducción, transformación o cualquier otro tipo de explotación sin el consentimiento expreso y autorizado por escrito de HIKVISION. HIKVISION se reserva todos los derechos reservados. HIKVISION no se hace responsable de las actividades de producción de armas químicas o biológicas, ninguna actividad en el contexto relacionado con algún tipo de control nuclear, ni de actividades relacionadas con el ciclo de combustible nuclear o con cualquier otro tipo de actividad de energía nuclear.
EN EL CASO DE HABER CONFLICTO ENTRE ESTE MANUAL Y LA LEGISLACIÓN VIGENTE, ESTA ÚLTIMA PREVALECE.
Este producto y, en su caso también los accesorios suministrados, tienen la marca "CE" y por tanto cumplen con las normas europeas armonizadas aplicables en materia de la Directiva de equipos de radio de 2004/108/CE, la Directiva de compatibilidad electromagnética 2002/95/CE (Directiva WEEE) y la Directiva de restricción del uso de sustancias peligrosas 2002/95/CE (Directiva RoHS). Los productos marcados con este símbolo no pueden ser desechados en el sistema de basura municipal sin un registro selectivo. Para un reciclaje adecuado, entregue este producto en el lugar de compra de equipo electrónico o envíe el equipo a un punto de recogida designado a tal efecto.
Para ver más información, visite www.recycle4eu.com.
2006/96/CE (Directiva sobre baterías): Este producto lleva una batería que no puede ser desechada en el sistema municipal de basura sin un registro selectivo dentro de la Unión Europea. Consulte la documentación del producto para ver la información específica de la batería. La batería lleva marcado este símbolo, que indica una letra indicando el contenido: cadmio (Cd), plomo (Pb) o mercurio (Hg). Para un reciclaje adecuado, entregue la batería a su vendedor o llévela al punto de recogida de basuras designado al efecto. Para ver más información, visite www.recycle4eu.com.
Para usar el producto debe cumplir estrictamente con la normativa de seguridad eléctrica de su país y región.
PRECAUCIONES RELATIVAS A LA BATERÍA
PRECAUCIÓN:
- Riesgo de explosión si se reemplaza la batería por otra de tipo incorrecto.
- Una sustitución inadecuada de la batería por otra de tipo incorrecto podría inhabilitar o alterar medidas de protección (por ejemplo, en el caso de alguna batería de litio).
- No exponga la batería al fuego ni la meta en un horno caliente, ni intente explotar o cortar mecánicamente la batería, ya que podría explotar.
- No deje la batería en lugares con temperaturas extremadamente altas, ya que podría explotar o tener fugas de líquido electrolítico o gas inflamable.
- No permita que la batería quede expuesta a una presión de aire extremadamente baja, ya que podría explotar o tener fugas de líquido electrolítico o gas inflamable.
- No permita que la batería quede expuesta a una presión de aire extremadamente baja, ya que podría explotar o tener fugas de líquido electrolítico o gas inflamable.
- Deshágase de las baterías usadas conforme a las instrucciones.
- Identifique los terminales positivos de los equipos que se utilicen con corriente continua o que la generen - identifique los terminales negativos de los equipos que se utilicen con corriente continua o que la generen.
PRECAUCIONES DE INSTALACIÓN
- Instale el equipo de acuerdo con las instrucciones de este manual.
- Para evitar lesiones, este equipo debe estar firmemente sujeto al punto de anclaje de acuerdo con las instrucciones de instalación.
- La fuerza adicional sobre el equipo puede ser una consecuencia de una vibración o choques. El equipo y el soporte asociado deben permanecer seguros durante la instalación. Tras la instalación, no se debe dañar el equipo ni tampoco las placas de montaje asociadas.
- No coloque lámparas encendidas, como velas encendidas, sobre el equipo.

